



Florida League of Cities

Center for Municipal Research & Innovation

MiniSurvey – Resiliency & Sustainability Concerns

The Center for Municipal Research & Innovation conducted a survey of the 412 municipalities in Florida regarding their views on topics related to risks and resiliency. The survey was conducted electronically from February 27 – March 23, 2018, with 87 respondents representing 72 cities.

Key Take-Aways

Of those who responded:

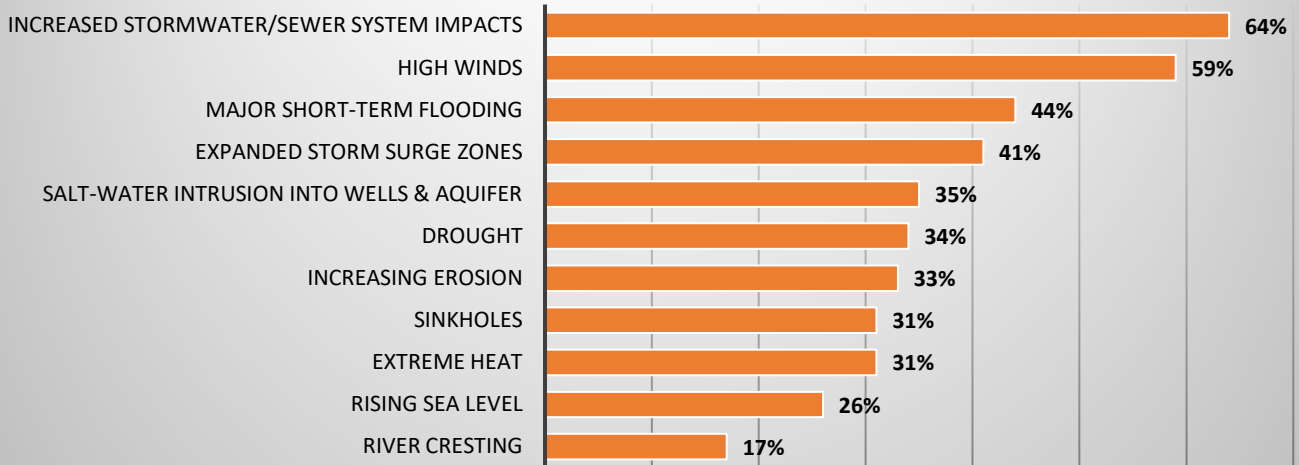
- **Of hazards that might seriously and negatively affect their cities in the next 10 years in terms of physical and economic damage, nearly two-thirds (64%) indicated that they are extremely concerned or very concerned about stormwater/sewer system impacts.**
 - Other hazards respondents indicated that they are extremely concerned/very concerned about are high winds (59%), major short-term flooding (44%) and expanded storm surge zones (41%).
- **There was some variation by geographic region in the hazards about which respondents said they were extremely/very concerned:**
 - North Florida: increased stormwater/sewer system impacts (65%), major short-term flooding (53%) and expanded storm surge zones (41%);
 - Central Florida: increased stormwater/sewer system impacts (68%), high winds (62%) and sinkholes (42%); and
 - South Florida: high winds (66%), increased stormwater/sewer system impacts (59%), and expanded storm surge zones (55%).
- **50% of respondents have 13 or more years in elected office or working for a local government.**
 - Of the remaining survey respondents, 30% have between 5 and 12 years of experience and 20% have 4 or less years of experience in local government.
 - Nearly half of respondents have a professional background in business (30%) or planning (15%).

Page 2 of this report contains additional graphs of the data collected. Contact Research Analyst Liane Schrader at lschrader@flcities.com for the survey questions or additional information.

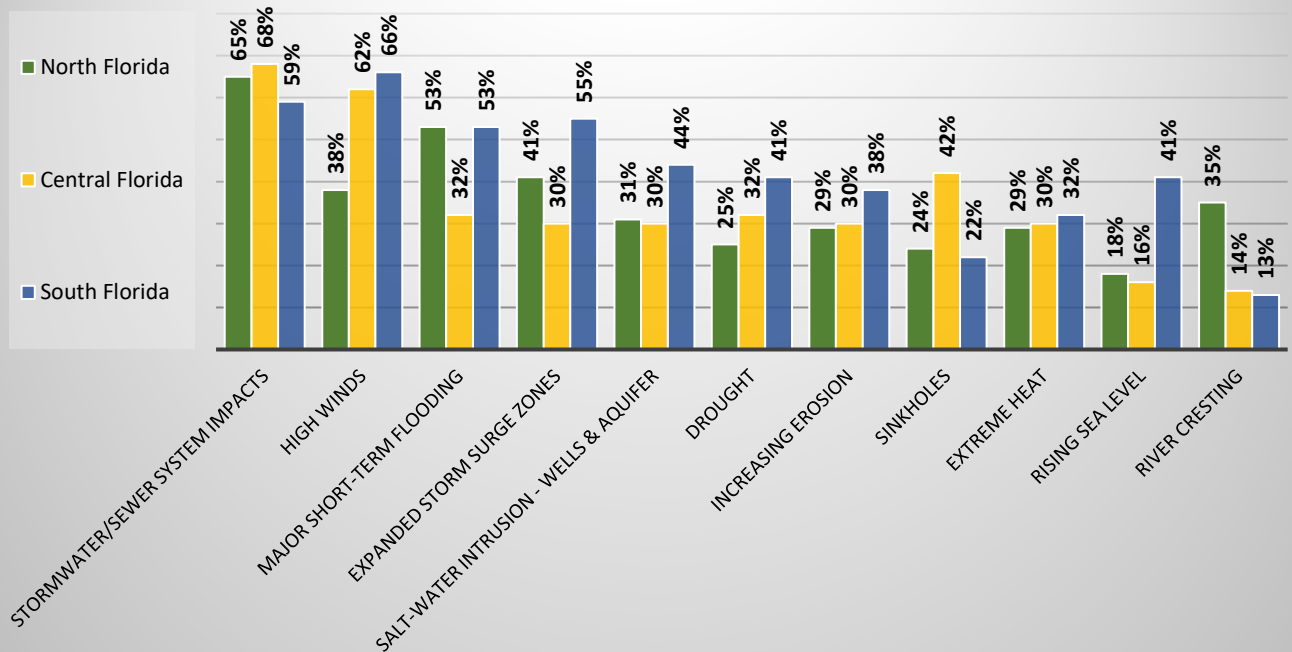
The FLC Center for Municipal Research & Innovation is the primary source of local government research and resources at the Florida League of Cities. The Center serves as a link between Florida's public policy researchers and municipal governments, bridging the gap between academics and public policy makers and administrators. More information on the Center can be found at www.floridaleagueofcities.com/ResearchMaterial.aspx.

**Surveys are completed by members of each individual municipality and the FLC staff does not verify or cross-reference responses with other sources.*

Hazards that might seriously and negatively affect cities in the next 10 years in terms of physical and economic damage *percent of respondents who were extremely concerned or very concerned*



Hazard concerns by region - extremely concerned/very concerned



Survey Respondents by Years of Experience

